



WELCOME TO FRONTIER*i* CONSULT

The Former BDS-Center for Development Research

www.frontieri.com

Corporate profile

2020

FRONTIER*i*

"Innovative Ideas, Pragmatic Solutions, and Empowerment"



MESSAGE FROM MANAGING PARTNER



Belaineh Legesse (PhD)

Managing Partner-Ethiopia



Sindu W.Kebede (PhD)

Managing Partner-Germany

Frontieri (formerly known as BDS Center for Development Research (BDS – CDR)) believes that as a central element to growth and development in the modern world, research and consultancy should keep pace with the changes of time.

We are a big team with diverse expertise and a big network. This allows us to bring together the right people, skills and connections in a timely manner to meet our clients' needs.

We take pride in the work we do, and we operate to the highest standards of professionalism and integrity, as many of our pleased clients attest.

With over 10 years' of experience in research and consultancy, we have accomplished many projects of various nature and magnitude that range from development research and delivering analytical reports to survey design assignments.

We use the state-of-the-art tools for all research and consultancy services that we provide and adding on and improving them constantly as we aspire to go to the knowledge frontier.

As always, we manage this by working closely with our clients and partners with consistency, integrity and passion.

We would like to take this opportunity to express our gratitude to all who worked with us over the years and helped us get here. Since we are dedicated to sharing our expertise and experiences accumulated over the years, working with you is not only rewarding but also a pleasure!




Belaineh Legesse (PhD)
Managing Partner-Ethiopia


Sindu W.Kebede (PhD)
Managing Partner-Germany



OUR EXPERTISE



Research & Evaluation

Survey Management & Data analysis

Program Design & Implementation

Private Sector Development

FRONTIER*i*



AGRICULTURE & RURAL DEVELOPMENT





Belaineh Legesse (PhD)

Managing Partner-Ethiopia

- ▶ Rigorous Policy-oriented Research on Issues Related to Agricultural Growth and Productivity
- ▶ Delivering Analytical Reports on Agriculture and Rural Development
- ▶ Consulting and Advisory Roles on Agriculture and Rural Development
- ▶ Social, Economic and Environmental Assessments Related to Agriculture and Rural Development
- ▶ Result-Based Monitoring and Evaluation on Agriculture and Rural Development
- ▶ Producing Quality Completion Reports on Different Developmental Programs.

FEATURED PROJECTS

Agriculture and rural development

- ▶ Agricultural Growth Program Survey and Establishing of Baseline Data for Impact Evaluation for Ministry of Agriculture.
- ▶ Luna Livestock and Out-Grower Development Project Baseline Assessment for IFC/World Bank Group.
- ▶ Baseline Survey for the Project “Support to Early Recovery and Socio-Economic Stability of the Drought Affected Population in Ethiopia” for Save the Children Ethiopia.
- ▶ Preparation of Implementation Completion and Results report On PCDP II for Ministry of Federal and Pastoral Area Development Affairs (MoFPDA).
- ▶ Sustainable Land Management Program-SLMP II Borrowers Completion Report and Project Case Story Documentation for Ministry of Agriculture
- ▶ Food Loss Assessment: Causes and Solution; Case Study in Small - Scale Maize and Teff in Dender and Mechekel Woredas for IFAD
- ▶ Participatory Small-Scale Irrigation Development Program (PASIDP) Impact Assessment Report and Project Completion Report (PCR) for Ministry of Agriculture and Natural Resources.
- ▶ Baseline Data collection on “Strengthen PSNP4 Institutions and Resilience (SPIR) Development Food Security Activity (DFSA)” for International Food Policy Research Institute(IFPRI).



SOCIAL PROTECTION





Paulos Asrat (PhD)

Team Leader, Social Protection Unit



Social Security Programs and Services



Fair Enjoyment of Basic Social Services



Social Norms and Values



Development Safety Net in Rural and Urban Areas



Employment Opportunities and Living Condition



Legal Protection and Support for Citizens Exposed to Violence and Oppression



Operational Research on different components of Social Protection

FEATURED PROJECTS

Social Protection



Impact Evaluation of PSNP and CBHI Linkages: Qualitative Component of a Longitudinal Study to Assess the Impacts of PSNP and CBHI Linkages on Client Households for UNICEF Ethiopia.



Ethiopia Urban Productive Safety Net Project (UPSNP): Third Round Proxy Means Test (PMT) Verification, for Federal Urban Job Creation and Food Security Agency



Baseline Survey on Current KAP Regarding Peace Building, Social Cohesion and Resilience in Afar, Benishangul-Gumuz, Gambella and Somali Regions for UNICEF Ethiopia.



Impact Evaluation of PSNP and CBHI Linkages: Quantitative Component of a Longitudinal Study to Assess the Impacts of PSNP and CBHI Linkages on Client Households for UNICEF Ethiopia.



Baseline Study on “Impact Evaluation of Integrated Nutrition-Social Cash Transfer Pilot Program (IN-SCI) Under the PSNP in Oromia and SNNP Regions for International Food Policy Research Institute (IFPRI).



End line survey for “Impact Evaluation of Integrated Nutrition-Social Cash Transfer Pilot Program (IN-SCI) Under the PSNP in Oromia and SNNP Regions for International Food Policy Research(IFPRI).



Baseline Data for the Development Response to Displacement Impacts Project (DRDIP) Implementation for Ministry of Agriculture.



Innovation in Delivery of Better Basic Services: Challenges and Opportunities for Ethiopia, Ministry of Finance and Economic Development (MoFED).



A System of Spot Checks for the Government of Ethiopia's Rural Safety Net in Afar and Somali Regions for The world Bank Group.



Rural Safety Net National Spot Check for The World Bank Group

EDUCATION & YOUTH DEVELOPMENT





Tinsaye Tamerat (PhD)

Senior Research Fellow

-  Improving Educational Program Development and Implementation
-  Improving Efficiency and Effectiveness of Education Systems,
-  Enhancing Human and Institutional Capacity of Educational Institutions,
-  Technical Support on Early-childhood, Primary, Secondary, Non-formal Adult, TVET, and Higher Education
-  Policy and Program Development; Program Monitoring and Evaluation; Curriculum and Textbook Development; School Improvement; Teacher Education, and Learning Assessment
-  Gender responsive education, out of school children, and education of children with special educational needs,
-  Developing Training Modules and Data Collection Tools Based on Clients' Request.

FEATURED PROJECTS

Education & Youth Development



General Education Quality Improvement Program II (GEQIP II) Comprehensive Evaluation (Exit Evaluation) for Ministry of Education.



Formative Evaluation of the Implementation of Primary and Secondary School Curricula in Ethiopia for Ministry of Education.



School Grant Annual Review 2010/2011- for Ministry of Education/ UNDP.



Teacher Demand and Supply Gap in Ethiopia: Scope, Factors and Possible Remedies for British Council.



Baseline Survey of UNICEF-Supported Basic Education Programme in Ethiopia with an Evaluative Approach for UNICEF Ethiopia.



New ICT Policy in Education for Ministry of Education.



Overall Data Quality Assessment of the Education sector for Central Statistical Agency (CSA).



Evaluation of School Improvement and Planning and Implementation and the flow and Utilization of School Grant for the World Bank Group.



Rapid Assessment of School Grant Program (SGP-2009) for Ministry of Education/ UNDP.



National Education Facility Survey for Ministry of Finance and Economic Development (MoFED).



Diagnostic of Inclusive Education Resource Center Pilots in Ethiopia for the World Bank Group.



Evaluation of the UNICEF/MOWCYA Adolescent/Youth Development Program, (2007 – 2011) for UNICEF Ethiopia.

ECONOMIC GROWTH





Negussie Shiferaw

Senior Researcher Officer

 Economic Development Studies

 Employment and Job Creation

 Conducting Sector Review and Developmental Projects Implementation Status

 Conducting Comprehensive Evaluation on Different Developmental Programs

 Making Major Policy Recommendations.

FEATURED PROJECTS

Economic Growth



Effectiveness of Financial Transparency and Accountability (FTA) Initiatives and Impact Assessment on Budget Literacy Training (BLT) under Promotion of Basic Service (PBS) Program, Ministry of Finance and Economic Development (MoFED).



Cost-Benefit Analysis of Migration to Sending, Transit, and Host Economies in Ethiopia for GIZ



Mid-Term Evaluation for Basic Services Project (BASES) Under Peace and Development Program (PDP), Save the Children Ethiopia.



Qualitative Research on Employment of Rural Migrants in Urban Areas in Ethiopia for World Bank Group.



Revenue Generation Strategies for Developing Regional States (DRS) in Ethiopia, DRS-UN-JP Coordination Secretariat.



Financial Management and Control, for Pro Development Network (PDN).



Provision of Project Cycle Management Training for Pro Development Network (PDN).



Impact Study for Rural Financial Intermediation Program II (RUFIP II) for Development Bank of Ethiopia



Qualitative Research Study on Rural Youth Employment in Ethiopia for the World Bank Group.







HEALTH, WATER & SANITATION



Prof. Nigatu Regassa

Team Leader, Health, Water and Sanitation Unit

-  Result Based Monitoring Activities on Different Public Health, Water & Sanitation Areas
-  Operational Research on Different Public Health, Water & Sanitation Areas and Related Interventions
-  Analyzing How the Access to Drinking Water and Sanitation Services is Evolving
-  Assessing the Climate Change Effects on Public Health
-  Investigating how Ethiopia is Managing the SDGs Related to Health, Water & Sanitation Within Agreed Targets & Time Frame
-  Analyzing Coverage and Trends of Key Indicators for Reproductive Health, Maternal and Child Health, and Nutrition in Urban & Rural Area, So as to Assess Health Equity Issues in Different Geographic Settings
-  Coming Up With Fresh and Innovative Policy Solutions in Rural and Urban Settings, With Special Focus on Agrarian, Pastoralist and Urban Settings
-  Conducting other Health, Water & Sanitation Related Research Works Based on the Client Interest and RFP.

-  Baseline Survey of the UNICEF - UNFPA Joint Programme (JP) Phase III on HIV Prevention, Sexual Reproductive Health And Violence Response Among Most-at-risk Adolescents and Youth in Ethiopia for UNFPA Ethiopia
-  Final Evaluation of Phase II Passive Vaccine Storage Devices (PVSD) Project in Ethiopia for UNICEF Ethiopia.

FEATURED PROJECTS

Health, Water & Sanitation

-  Validating the Global Framework to Measure and Evaluate Changes in Social Norms in FGM Programming for UNICEF Ethiopia
-  Ethiopia's Six Health Accounts (HA VI) Survey of Health Service Utilization and Expenditures among People Living with HIV/AIDS (PLHIV) for Abt Associates, Inc.
-  Information Meetings on the Enhanced Outreach Strategy/ Community Health Days (EOS/ CHD) and Increased Supervision of the Screening Quality in Ethiopia for UNICEF Ethiopia.
-  Baseline Assessment Survey as a Benchmark as well as Conducting Project Evaluation after a year for Phase II PVSD Project in Afar, SNNP, Somali, Oromia, and Tigray Regions for UNICEF Ethiopia.
-  Qualitative Data Collection, Transcribing and Translation for ARIDA Implementation Evaluation in Ethiopia project in 5 regions for UNICEF Ethiopia
-  A Formative Research on Adolescent Nutrition, for Save the Children Ethiopia office.
-  Baseline Survey for the Project, Improvement of Water Supply and Sanitation in Guraghe Zone, SNNPR for Korean International Cooperative Agency (KOICA).
-  The Trials of Improved Practices on Maternal Nutrition” for Save the Children Ethiopia office.
-  Evaluation of Community Based Management of Acute Malnutrition (CMAM) / Infant and Young Child Feeding (IYCF) Monitoring Activity in Ethiopia for UNICEF Ethiopia.
-  Outcome Evaluation of Community Led Total Sanitation and Hygiene (CLTSH) In Ethiopia from 2012-2015 for UNICEF Ethiopia.
-  Household, Community and Facility Survey: Impact Evaluation of Rural Water Supply and Sanitation Program in Ethiopia for African Development Bank.

ENVIRONMENT & ENERGY





Samuel G/Selassie (PhD)

Senior Research Fellow



Environmental and Energy Related Studies



Climate Change & Green Energy Related Studies



Social, Economic, & EIA Studies Related to Environment and Energy



Results-Based Monitoring & Evaluation Pertaining to Environment & Energy



Making Environmental and Energy Related Policies

FEATURED PROJECTS

Environment & Energy



Household Survey: Multi-Tier Measurement of Energy Access in Ethiopia for the World Bank Group.



Endline Survey for “Sustainable Development of the Gambella and Rift Valley Landscapes” Project for Horn of Africa Regional Environment Center and Network (HoA-REC&N).



Baseline Data Collection: USAID/Ethiopia Land Administration to Nurture Development (LAND) Impact Evaluation (IE) in Oromia Region for Cloudburst Consulting Group-USAID-Ethiopia.



Baseline Data Collection: USAID/Ethiopia Land Administration to Nurture Development (LAND) Impact Evaluation (IE), Afar Region for Cloudburst Consulting Group-USAID-Ethiopia.



Baseline Survey for the Project “Support to Early Recovery and Socio-Economic Stability of the Drought Affected Population in Ethiopia” for Save the Children- Ethiopia.



Baseline Study for the Implementation of Improved Cook Stove and Solar Project in Tigray and SNNP Regional States for German Development Cooperation (GIZ).



PRIVATE SECTOR DEVELOPMENT





Teketel Abebe (PhD)

Senior Research Fellow



Provide Financial Sector Support



Offer Training Services on International Standards and Reporting



Conduct Studies on Value Chains and Supply Chains Development



Develop Innovate Business Relations



Provide Entrepreneurship Development Support



Provide Investment Advisory Services



Make Public-Private Partnerships Related Policies

FEATURED PROJECTS

Private Sector Development

The Implication of Joining COMESA-EAC-SADC Tripartite FTA on the Ethiopian Economy, for Ministry of Trade.

Provision of Training of Trainer on Supply Chain for WFP.

New ICT Policy for General Education, Ministry of Education

Revenue Generation Strategies for Developing Regional States (DRS) in Ethiopia, DRS-UN-JP Coordination Secretariat

Pathways for Sustainable Employment for Women and Youth in Ghana and Ethiopia (PASEWAY) - Assessment on Formal Employment Opportunities (for Ethiopia) for Plan International Germany

Support UNICEF and MoLSA in Annual Social Protection Sector Review and Development of Costed Social Protection Action Plans for Five Regions and Two City Administrations (Addis Ababa, Afar, Benishangul, Dire Dewa, Gambella, Harari and Somali) for UNICEF Ethiopia:

Revision of Strategic Plan for Community Care Structures and Developing Guidelines with Action Plans for Strengthening CCS in Line with National Social Protection Policy, Ministry of Labour and Social Affairs (MOLSA).



PROGRAM DESIGN & IMPLEMENTATION



Lamessa Tariku (PhD)

Senior Research Officer

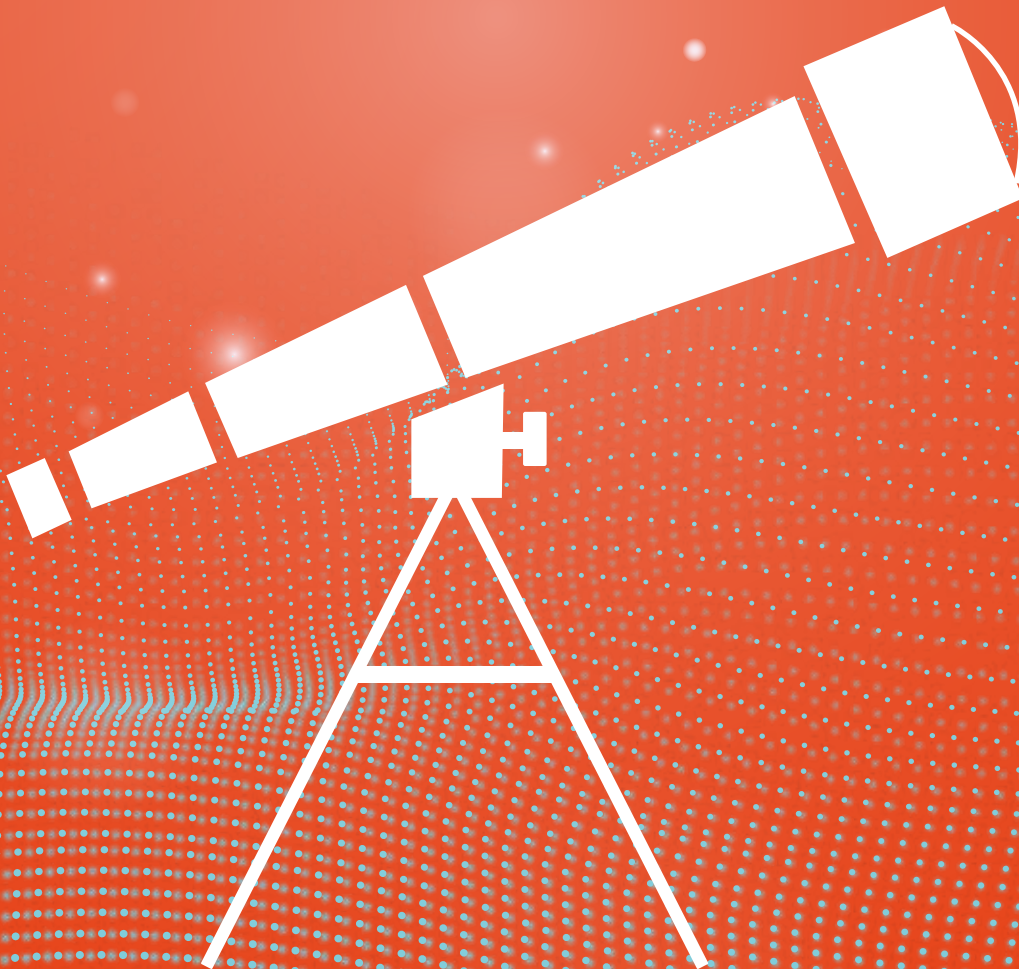
- </> Provide Support in Program Design/ Building Effective Program;
- </> Work Towards Systems Strengthening and Scaling
- </> Provide Support in Capacity Assessment and Building
- </> Undertake Implementation of Intervention Programs
- </> Provide Support in Technical Assistance
- </> Undertake Capacity Assessment
- </> Provide Support in Strategic Performance and Capacity Building

FEATURED PROJECTS

Program Design & Implementation

- </> Evaluation of a Capacity Building Project in Remote Zones in SNNPR with Teams of NUNV Experts for UNICEF Ethiopia.
- </> Strategic planning and Management (SPM), for Pro Development Network (PDN).
- </> Revision of Strategic Plan for Community Care Structures and Developing Guidelines with Action Plans for Strengthening CCS in Line with National Social Protection Policy for Ministry of Labour and Social Affairs (MOLSA).
- </> Development of Professional Standards for Subject Teachers 2013 for Ministry of Education.
- </> Preparation of Implementation Completion and Results report On PCDP II for Ministry of Federal and Pastoral Area Development Affairs (MoFPDA).
- </> Developing Monitoring and Evaluation System Study for RUFIP II Programme for Development Bank of Ethiopia.
- </> Monitor and Implement Strategies to Improve the Quality of the Management of Severe Acute Malnutrition in all Regions of Ethiopia for UNICEF Ethiopia.

SURVEY MANAGEMENT & DATA ANALYTICS





Mr. Alene Matsentu

Director, Survey Management & Data Analytics
Division



**Survey Design
Services**



**Qualitative Data
Collection Services**



**Quantitative Data
Collection Services**



**Questionnaire
Programming**



**Mapping &
Listing Survey**



Field Staff Training



**Data Transfer
protocol**



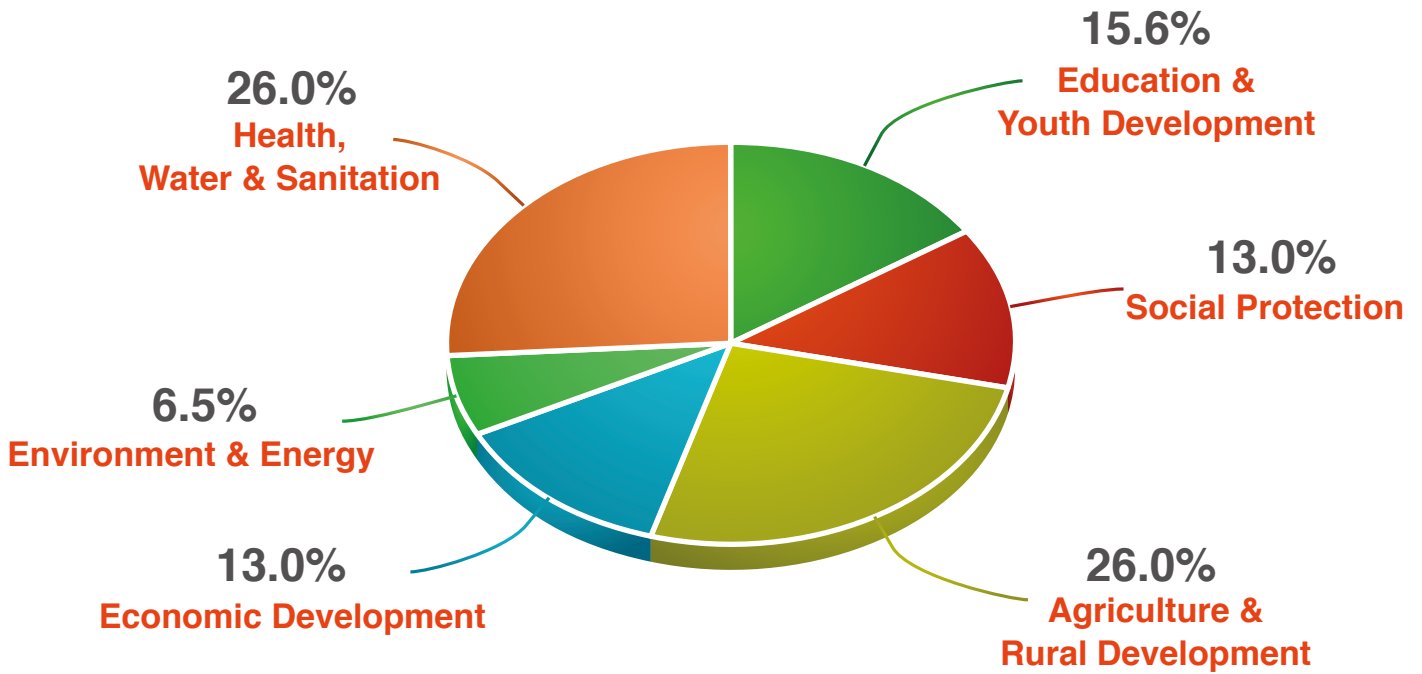
**Monitoring Data
Quality**



Data Cleaning



SECTORIAL COVERAGE



■ Education & Youth Development
■ Agriculture & Rural Development
■ Environment & Energy

■ Social Protection
■ Economic Development
■ Health, Water & Sanitation

80+

Qualitative Field
Researchers

100+

Supervisors

50+

Field
Coordinators

50+

Audio
Translators

1000+

Enumerators

100+

Audio
Transcribers

04

FIELD STAFF DATABASE

05 | OUR CLIENTS



Save the Children





The ministry of education is pleased to acknowledge the excellent professional service it received from the firm and appreciates the exit evaluations project management and communication skills of the company, which were very indispensable in effectively understanding the evaluation.



Elias Girma Wakjira
Director, planning & Resource Mobilization Directorate



BDS Center for Development Research was found to be dependable and professional. I hereby acknowledge that they have completed the assignment and submitted all deliverables with high quality.



Lucian Pop
Senior Social Protection Specialist



We highly recommend BDS Center for Development Research and look forward to using their dependable and professional services again.



Lidia Mordel
Programme Specialist Eastern and Southern Africa



We have observed that BDS has the experience, facility, capable personnel in research and consultancy area who are enthusiastic about their client's diverse interest. Hence, the firm is in our list of highly regarded Ethiopian origin companies we are comfortable to work with.



Nahume Yadene
Program Management officer Ethiopia Strategy Support Program



Chief Executive Officer

Belay Fekadu
b.fekadu@frontieri.com

Managing Partner-Ethiopia

Belaineh Legesse (PhD)
b.legesse@frontieri.com

- 📍 Addis Ababa, CMC near St. Michael Church
- ✉ info@frontieri.com or b.fekadu@frontieri.com
- ☎ +251 116 675 735 /+251 116 479 517/ +251 116 478 129
- 📞 0116 479 778
- 📱 +251 929 229 482

Managing Partner-Germany

Sindu W.Kebede (PhD)
s.kebede@frontieri.com

- 📍 Rheinsberger Str. 76/77, 10115 Berlin, Germany
- ✉ info@frontieri.com or b.fekadu@frontieri.com
- ☎ +49-176 7232 6782
- 📧 sindu workneh
- 📱 +49-176 7232 6782

FRONTIER*i*

w w w . f r o n t i e r i . c o m

